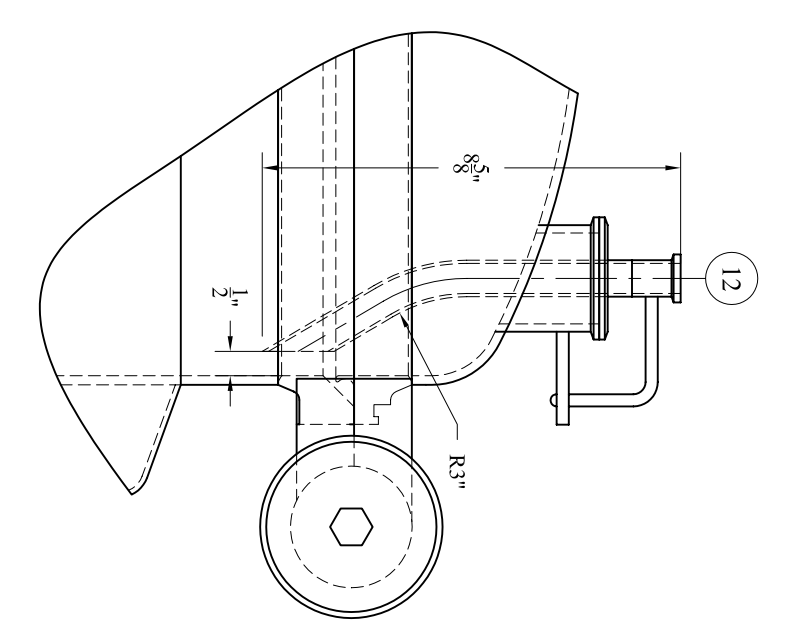
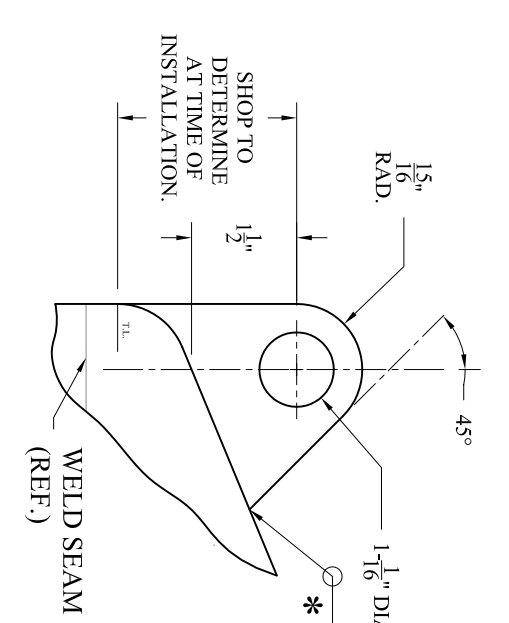
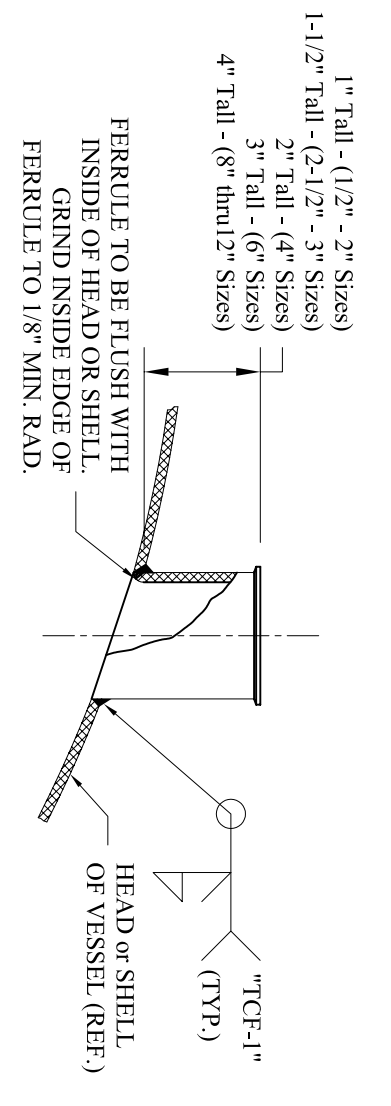


NOZZLE SCHEDULE	WELD	CERT. REQ.	PARTIAL MOUNTING
ITEM	SIZE	TYPE	NO.
11	11-1/2"	SPRAYBALL	CR
12	3/4" x 2"	NO FLOW ASSEMBLY	CR
13	1-1/2"	RIFTLER DISC	CR
14	1-1/2"	PRESSURE GAUGE	CR
15	1-1/2"	VINYL	CR
16	1-1/2"	OUTLET	CR



ITEM	NO.	DESCRIPTION	QTY	UNIT	DATE
1	1	TGC ASME DATA PLATE	1	PLATE	8/16/04
2	2	MANWAY ASSEMBLY, 16\"/>			
3	3	BRACKET CLASS VIBRATION MOUNTING, 3\"/>			
4	4	NO FLOW ASSEMBLY, HANDLE & SPRING ASSEMBLY HINGE, COVER THE KNEES - 7\"/>			
5	5	3\"/>			
6	6	LEFT HANDLE, 3\"/>			
7	7	LEFT HANDLE, 3\"/>			
8	8	LEFT HANDLE, 3\"/>			
9	9	SPRAYBALL ASSEMBLY TO BE RATED FOR 2\"/>			
10	10	INSULATION, 2\"/>			
11	11	C.I.P. ASSEMBLY, BUTT WELD CONNECTION TYPE	11	ASSEMBLY	02/18
12	12	FERRULE HEAD HEAVY WALL SANITARY CLAMP STYLE, 3\"/>			
13	13	CLAMP, SS, 3\"/>			
14	14	FERRULE HEAD HEAVY WALL SANITARY CLAMP STYLE, 1-1/2\"/>			
15	15	CLAMP, SS, 1-1/2\"/>			
16	16	NO FLOW ASSEMBLY	16	ASSEMBLY	06/18/06
17	17	NO FLOW ASSEMBLY	17	ASSEMBLY	06/18/06
18	18	NO FLOW ASSEMBLY	18	ASSEMBLY	06/18/06

APPROVED FOR MANUFACTURE
 By: _____ Date: _____
 Any changes after the date noted above may affect price and/or delivery.

T & C STAINLESS
80 LITER ASME
PROB VESSEL

CUSTOMER: DOWE CONSTRUCTION CORP.
 ADDRESS: SOUTH SAN FRANCISCO, CA
 TITLE: 80 LITER ASME PROB VESSEL

DESIGNED BY: R. MOTES
 CHECKED BY: SQUAD
 APPROVED BY: J. GAYNER

ESTIMATED NET WEIGHT: 390 LBS
 SCALE: NONE
 DRAWING IS NOT TO BE SCALED

CERTIFIED DRAWING

REVISIONS:
 1. AS PER REVISED SPECIFICATIONS AND MATERIALS LIST.
 2. CORRECTION TO NOZZLE SCHEDULE.

NOTES:
 1. ALL DIMENSIONS UNLESS OTHERWISE SPECIFIED ARE IN INCHES AND DECIMALS THEREOF.
 2. THE CORROSION RESISTANCE OF THE EQUIPMENT IS NOT THE RESPONSIBILITY OF T & C STAINLESS WITHOUT WRITTEN ACCEPTANCE BASED ON A SPECIFIC SERVICE.
 3. 5\"/>